

S10000 Power Bank

STREAMLINE YOUR POWER NEEDS



S10000 Power Bank

Packing 10000mAh of power and sporting a thin 14.8mm form factor, the S10000 won't let or weight you down. Built with lithium polymer batteries, it offers a high conversion rate for better efficiency. Plus dual-USB ports with a total output of up to 2.1A, the S10000 can simultaneously charge two mobile devices.

Thin and Light, Carry and Go

The S20000D features a digital display that shows you the precise status of the power bank. Whether you're charging one device or two simultaneously, you'll know exactly how much power is left!

Charge Two Devices at Once

The S10000 features a dual-USB port design with a total output of up to 2.1A, allowing you to juice up two devices simultaneously, saving you time better spent elsewhere.



Multiple Forms of Circuit Protection

Safety is always the paramount concern for electronic devices, and the S10000 is no exception. Safe operations are guaranteed thanks to the device's protective measures against over-charge, over-discharge, short-circuit, and over-voltage in input and output.



Features

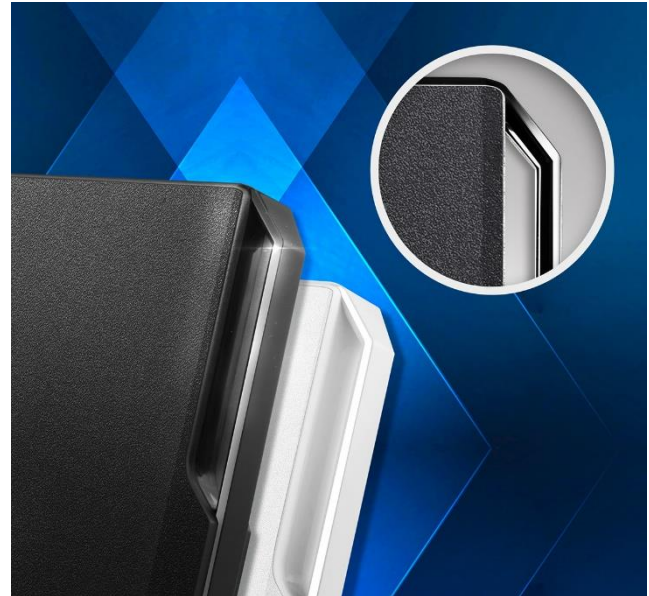
- Li-Polymer battery with 10000mAh capacity
- 14.8 mm slim design
- Integrated hanging loop
- Dual USB fast charging ports (total 2.1A)
- Multi-level circuit protection

Specifications

- Capacity: 10000mAh
- Battery: Li-Polymer
- Color: White / Black
- Dimension: 130x73x14.8mm/5.1x2.87x0.58inch
- Weight: 420g / 14.8oz
- Input: DC 5V / 2.0A
- Output 1 & 2: DC 5V / 2.1A max.
- Warranty: 1 year

Made to Hang Out Anywhere

A beautiful, yet simple mount that's built into the S10000 is super handy for hanging the unit on your bag, or anything for that matter, for easy carrying and storage.



Ordering Information

Color	Model Number	EAN Code
White □	AS10000-USBA-CWH	4713218469878
Black ■	AS10000-USBA-CBK	4713218469861

